

Understanding the eye-related
side effects that may occur
With Blenrep▼ (belantamab mafodotin)
A guide for patients

Read this guide along with the patient information
leaflet (PIL) inside the medicine box

Reporting of side effects:

▼ These medicinal products are subject to additional monitoring. This will allow quick identification of new safety information.

If you get any side effects, talk to your doctor, pharmacist or nurse. This includes any possible side effects not listed on this website or in the product package leaflet. You can also report side effects directly to HPRC Pharmacovigilance on their website: www.hpra.ie. By reporting side effects, you can help provide more information on the safety of this medicine.

Introduction

You have been prescribed **belantamab mafodotin** for your relapsed and refractory multiple myeloma. Belantamab mafodotin is a type of treatment that finds and destroys multiple myeloma cells. It does so by binding with B-cell maturation antigen (BCMA) on the surface of the cells.

This guide aims to inform you about what to expect with belantamab mafodotin treatment. Your **care team** will be by your side to **help you** along the way, so don't hesitate to **ask them questions**.

You may experience some side effects from your treatment.

Eye-related side effects of varying degrees are commonly associated with belantamab mafodotin.

This guide will **inform** you on how eye-related side effects may be **managed**, including how to identify symptoms and **proactively** monitor your eye health. Some eye-related side effects can occur without symptoms and are only detected through eye exams.



It is **common** for myeloma doctors to **adjust treatment** with belantamab mafodotin to **manage** side effects.

Table of Contents

Get to know your medicine	4
What is belantamab mafodotin?	5
Eye-related side effects may occur with belantamab mafodotin treatment	6
Managing your eye health during treatment	8
Lowering the risk of eye-related side effects	9
What kind of eye exams are involved?	10
Eye drops tracker	11
Eye care appointment tracker	13

Belantamab mafodotin:

Get to know your medicine

Belantamab mafodotin is a prescription medicine used to treat adults with multiple myeloma who have received at least 1 prior treatment and their myeloma did not respond, or who have relapsed on treatment.

It may be prescribed with:

- Bortezomib and dexamethasone: for patients who have received at least 1 prior treatment for multiple myeloma
- or
- Pomalidomide and dexamethasone for patients who have received at least 1 prior treatment for multiple myeloma including lenalidomide

The most common side effects reported during clinical trials were **eye-related side effects**, including but not limited to, blurred vision and dry eyes. These were managed with dose adjustments and temporarily extending the time between doses.

How your treatment is given:



As an infusion through your vein over about 30 minutes



Once every 3 or 4 weeks
(depending on the treatment combination)



In a hospital or outpatient clinic

What is belantamab mafodotin?

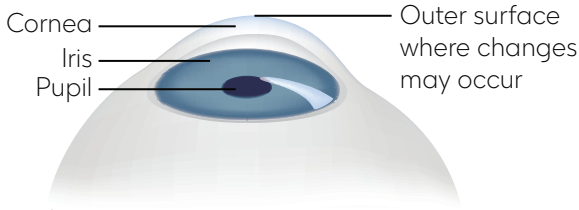
Belantamab mafodotin is a type of treatment known as an **antibody-drug conjugate (ADC)**.

It is made up of a monoclonal antibody (belantamab) that is attached to an anticancer drug (mafodotin).

Eye-related side effects may occur with belantamab mafodotin treatment

Tell your Haematologist/Oncologist about any history of vision or eye problems.

Eye-related side effects can be managed by decreasing your dose or extending the time between doses.



For illustrative purposes only.

The eye is made up of **different components that work together to help you see**. The cornea is the part of the eye that covers the iris and the pupil and helps to focus light that enters the eye.

Changes may occur on the surface of the cornea when you are being treated with belantamab mafodotin, which may lead to symptoms like those shown on the next page.



Some changes on the surface of the eye can occur **without symptoms** and are detectable only through eye exams. Even if your vision seems fine, your care team will ensure that your eyes are checked **before your first 4 doses**. Your care team will work to ensure you can stay on treatment and your eyes are protected. This may include your doctor asking for further eye exams throughout your treatment.

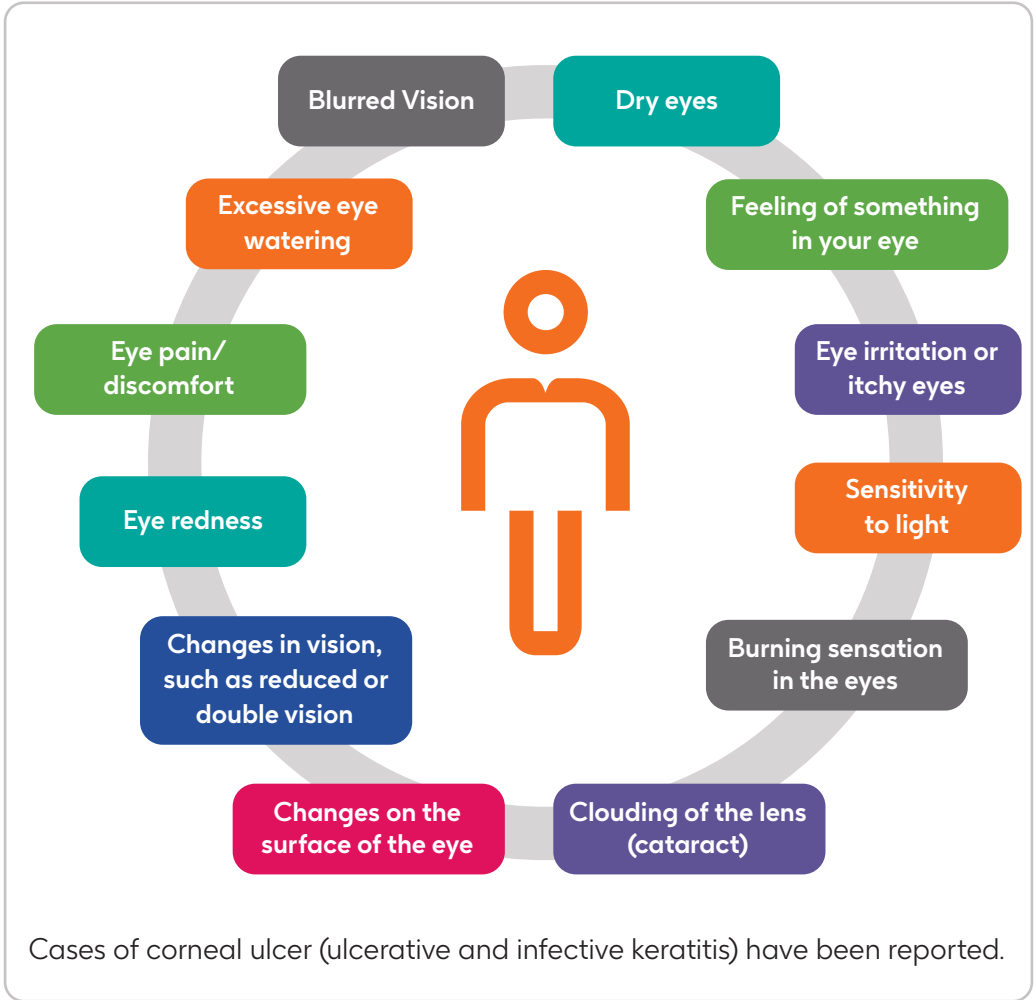


Not all patients will experience eye-related side effects, but if you do, your care team has a **plan to help**.



Belantamab mafodotin can often be administered to patients with a **history of vision or eye problems**. Talk to your doctor if this applies to you.

The most commonly reported eye-related side effects are:



This is not an exhaustive list of side effects. If you experience any other symptoms not listed, or want **more information**, please **speak with your myeloma doctor** and be sure to inform them of any additional medicines you are currently taking.

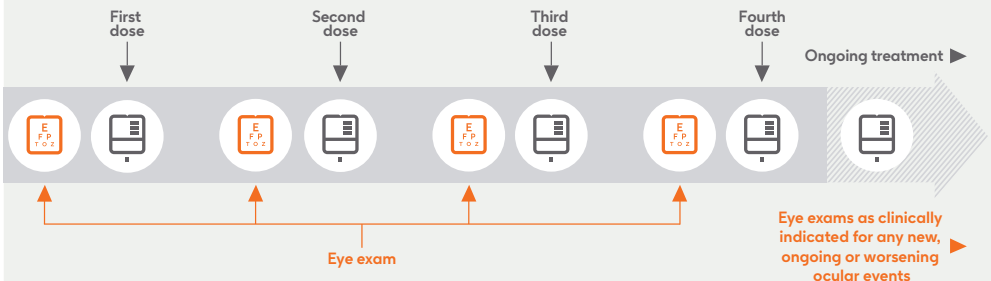
Managing your eye health during treatment

- Your care team will ensure your eyes are checked with two simple, common eye exams **before your first 4 doses** and as needed for any new, ongoing, or worsening eye-related side effects.
- Your myeloma doctor will use the results of your eye exam to determine whether or not to decrease your dose or extend the time between doses.



If you experience eye-related symptoms, **contact your care team promptly**. Your myeloma doctor may decrease your dose or extend your time between doses to help manage these effects.

Your care team will ensure **your eyes are checked** before your **first 4 treatments**



Lowering the risk of eye-related side effects



Your care team will advise you to use **eye drops** called **preservative-free artificial tears** at least **4 times a day** during treatment to moisten and lubricate your eyes. You should apply them as instructed.



Do not use contact lenses throughout your treatment, unless otherwise advised by your eye care professional.



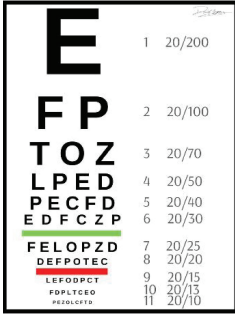
If your vision is affected, avoid driving or using heavy machinery.



Use the patient card to record important treatment information and contact details of your healthcare providers, for easy reference if you experience any eye-related side effects and require medical support.

What kind of eye exams are involved?

Your eye care professional will perform an eye exam that involves two common tests: a **visual acuity test** and **slit lamp exam**.



Copyright © 2025,
StatPearls Publishing LLC.

Visual acuity test

A visual acuity test measures your ability to distinguish fine details with and without corrective lenses. You will be asked to read the letters on a chart that is placed a certain distance away from you. Eye care professionals use this test to determine the need for prescription glasses.



Slit lamp exam

A slit lamp is a microscope combined with a bright light. During your slit lamp exam, you will be asked to sit facing the slit lamp with your forehead and chin on a support. You may also be given some eye drops. Your eye care professional will then examine your eye and determine whether there are any changes on the surface of your eye.



Use the **eye care appointment tracker** and **eye drop tracker** at the back of this guide to keep track of your appointments and eye drop use.

Eye drops tracker

In the spaces provided, write down the date that you apply your eye drops. Mark each circle with an X once the eye drops are applied.

Infusion cycle number:	Day 1	Day 2	Day 3
Date (Week 1)			
Eye drops applied	○ ○ ○ ○	○ ○ ○ ○	○ ○ ○ ○
Date (Week 2)			
Eye drops applied	○ ○ ○ ○	○ ○ ○ ○	○ ○ ○ ○
Date (Week 3)			
Eye drops applied	○ ○ ○ ○	○ ○ ○ ○	○ ○ ○ ○
Date (Week 4)			
Eye drops applied	○ ○ ○ ○	○ ○ ○ ○	○ ○ ○ ○

Infusion cycle number:	Day 1	Day 2	Day 3
Date (Week 1)			
Eye drops applied	○ ○ ○ ○	○ ○ ○ ○	○ ○ ○ ○
Date (Week 2)			
Eye drops applied	○ ○ ○ ○	○ ○ ○ ○	○ ○ ○ ○
Date (Week 3)			
Eye drops applied	○ ○ ○ ○	○ ○ ○ ○	○ ○ ○ ○
Date (Week 4)			
Eye drops applied	○ ○ ○ ○	○ ○ ○ ○	○ ○ ○ ○

Infusion cycle number:	Day 1	Day 2	Day 3
Date (Week 1)			
Eye drops applied	○ ○ ○ ○	○ ○ ○ ○	○ ○ ○ ○
Date (Week 2)			
Eye drops applied	○ ○ ○ ○	○ ○ ○ ○	○ ○ ○ ○
Date (Week 3)			
Eye drops applied	○ ○ ○ ○	○ ○ ○ ○	○ ○ ○ ○
Date (Week 4)			
Eye drops applied	○ ○ ○ ○	○ ○ ○ ○	○ ○ ○ ○

Day 4	Day 5	Day 6	Day 7
○ ○ ○ ○	○ ○ ○ ○	○ ○ ○ ○	○ ○ ○ ○
○ ○ ○ ○	○ ○ ○ ○	○ ○ ○ ○	○ ○ ○ ○
○ ○ ○ ○	○ ○ ○ ○	○ ○ ○ ○	○ ○ ○ ○
○ ○ ○ ○	○ ○ ○ ○	○ ○ ○ ○	○ ○ ○ ○

Day 4	Day 5	Day 6	Day 7
○ ○ ○ ○	○ ○ ○ ○	○ ○ ○ ○	○ ○ ○ ○
○ ○ ○ ○	○ ○ ○ ○	○ ○ ○ ○	○ ○ ○ ○
○ ○ ○ ○	○ ○ ○ ○	○ ○ ○ ○	○ ○ ○ ○
○ ○ ○ ○	○ ○ ○ ○	○ ○ ○ ○	○ ○ ○ ○

Day 4	Day 5	Day 6	Day 7
○ ○ ○ ○	○ ○ ○ ○	○ ○ ○ ○	○ ○ ○ ○
○ ○ ○ ○	○ ○ ○ ○	○ ○ ○ ○	○ ○ ○ ○
○ ○ ○ ○	○ ○ ○ ○	○ ○ ○ ○	○ ○ ○ ○
○ ○ ○ ○	○ ○ ○ ○	○ ○ ○ ○	○ ○ ○ ○

Eye care appointment tracker

Appointment	Date	Time	Notes
Before 1st treatment			
Before 2nd treatment			
Before 3rd treatment			
Before 4th treatment			
Additional eye exams as determined by care team			
Before 5th treatment			
Before 6th treatment			
Before 7th treatment			
Before 8th treatment			

Trademarks owned or licensed by GSK

©2026 GSK or licensor

The contents of this document have been approved by the HPRA.

Date of preparation: February 2026 NP-IE-MMU-BROC-250002 (v0.13).

Electronic Certificate

Version: 1 . 0

Document Number: NP-IE-MMU-BROC-250002

Document Name: Patients: Understanding eye-related side effects that may occur with Blenrep (belantamab mafodotin)

Country: Ireland

Product: MULTIPLE MYELOMA UNBRANDED

Type: Non-promotional content

It is certified that this material has been examined in its final electronic form and is believed to be in accordance with the requirements of S.I. No. 541 of 2007 (Medicinal Products [Control of Advertising] Regulation), the GSK Code of practice for promotion and scientific engagement (STD_344428), and the IPHA Code of Practice for the Pharmaceutical Industry. The material is a fair and truthful presentation of the facts about the product(s), it supports the rational use of medicines and is not inconsistent with the relevant marketing authorisation(s) and Summary of Product Characteristics.

Role	Signature
Priya Amlani - Pharmacovigilance (priya.m.amlani@gsk.com)	It is approved that this material has been examined and is believed to be in accordance with the relevant Code of Practice and any other relevant regulations, policies and SOPs. Date: 20-Feb-2026 09:31:40 GMT+0000
Michael Dillon - Medical (michael.v.dillon@gsk.com)	It is approved that this material has been examined and is believed to be in accordance with the relevant Code of Practice and any other relevant regulations, policies and SOPs. Date: 20-Feb-2026 11:24:31 GMT+0000